
Macintosh USB Driver

(Install & Data Connection Manual)

V 1.0E

2007.09.18



AnyDATA CDMA Modem Series Reference Design Specification
Copyright © 2000~2007 AnyDATA Corp. All Rights Reserved.

Any part of this document may not be distributed, communicated, reproduced or transmitted in any form or by any means, electronic or mechanical or otherwise, for any purpose, without the permission of AnyDATA Corp.

This document can be subjected to revision without further notice.

Contact Address

AnyData.Net Inc.(Korea)
DaeGo Bldg, 8 th., 1591-10
Kwanyang-dong, Dongan_gu,
Anyang City, Kyunggi-do Korea.
<http://www.anydata.co.kr>
e-mail: infodata@anydata.net
Rep: +82-31-380-7100
Fax: +82-31-476-6021

Contents

1. Driver Install.....	4
2. Data Connection.....	9

1. Driver Install

1. Remove USB Modem if it is connected to Mackintosh computer.
2. Insert included CD and double-click install program icon as shown below to execute it.



3. Click **“Continue”**.



4. When a message is displayed as below, click **“Continue”**.



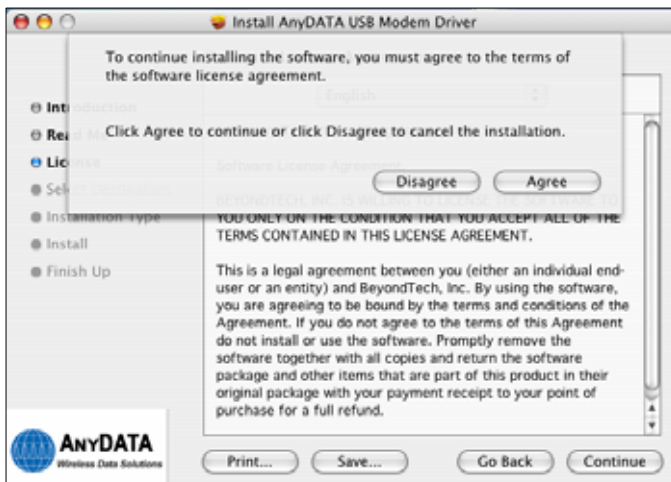
* If your system is not Mac OS X10.4.x, you cannot install the driver.

And if any AnyDATA connection equipment is connected to the system, the installation cannot go on. Make sure to separate it from the system and do install again.

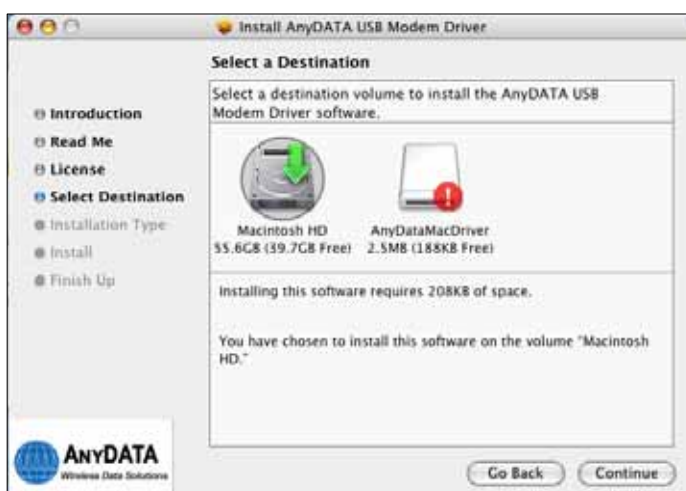
5. Read carefully important information as below.



6. Click “Agree” to the terms of the software license agreement.



7. The volume of installed driver is automatically installed.



8. Click **“Install”** or **“Upgrade”** button.



9. Enter the name and password of administrator and click **“OK”** to go to the next step.



10. The driver is being installed.

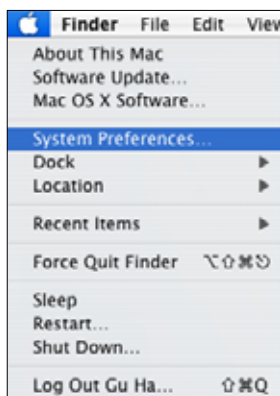


11. Reboot Mackintosh computer after installing the driver.



12. Connect USB Modem to Mackintosh computer after rebooting it.

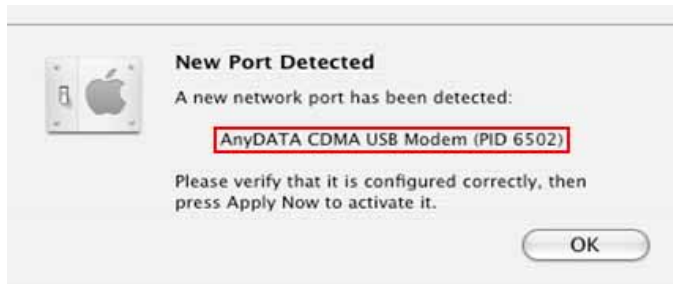
13. Tap “Apple” on top menu, and select “**System Preferences...**”.



14. Select “**Network**” item.



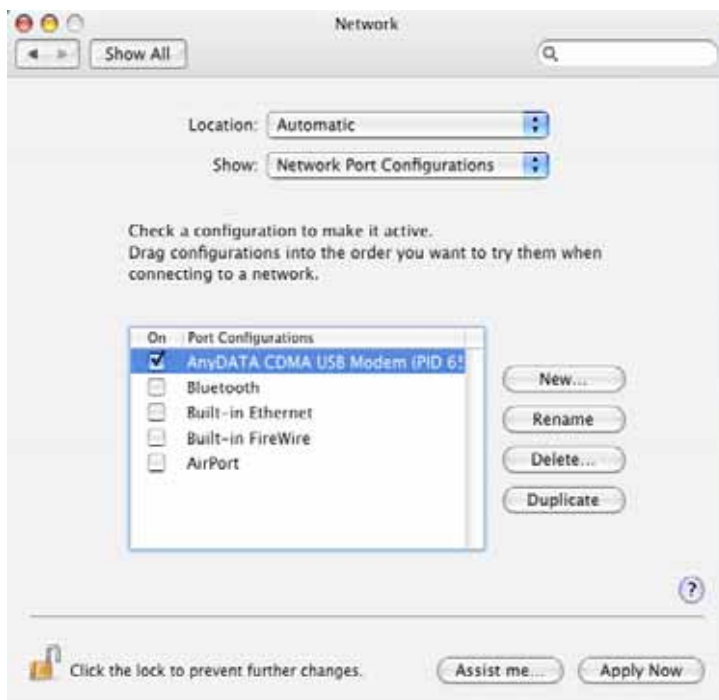
15. Click “OK” when a message is displayed as below.



<Note>

- * In above message window, the content in red-outlined box is various depending on the PID value. AnyDATA USB Modem has any PID value among 6501, 6502, 6202.
- * The Network Port Configuration of AnyDATA USB Modem is various depending on PID value.
 - In case that "PID = 6501", "AnyDATA CDMA USB Modem (PID 6501)"
 - In case that "PID = 6502", "AnyDATA CDMA USB Modem (PID 6502)"
 - In case that "PID = 6202", "AnyDATA CDMA USB Modem (PID 6202)"
- * If the content "AnyDATA CDMA USB Modem (PID 6502)" exists in this document, it will be applied depending upon the PID value of AnyDATA USB Modem which is being used.

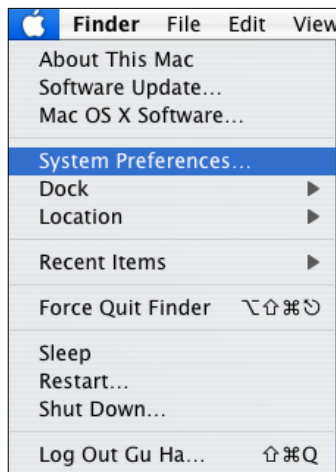
16. Select “Network Port Configuration” on “Show” menu, verify the driver is installed properly.
(AnyDATA CDMA USB Modem(PID 6502))



13. Tap “Apple” on top menu, and select “System Preferences...”.

2. Data Connection

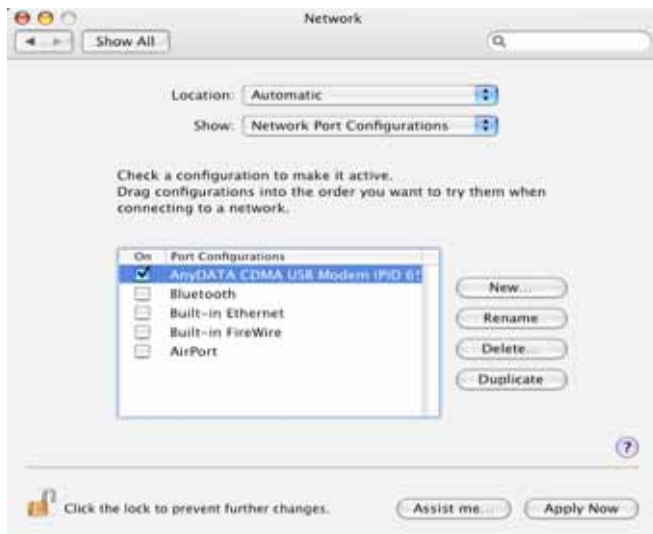
1. Connect USB Modem to Mackintosh computer.
2. Tap **“Apple”** on top menu, and select **“System Preferences...”**.



3. Select **“Network”** item.



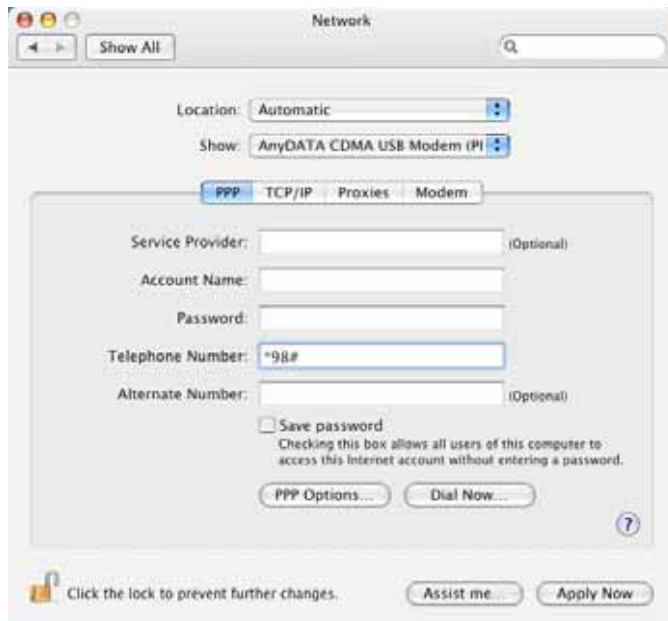
4. On “**Show**” scroll down menu, select “**Network Port Configuration**” as below.
Then AnyDATA driver will be displayed.



5. Click “**Show**” Popup menu, and select “**AnyDATA CDMA USB Modem (PID 6502)**”.



6. When a following screen is displayed, select “**PPP**” tab and enter the telephone number.



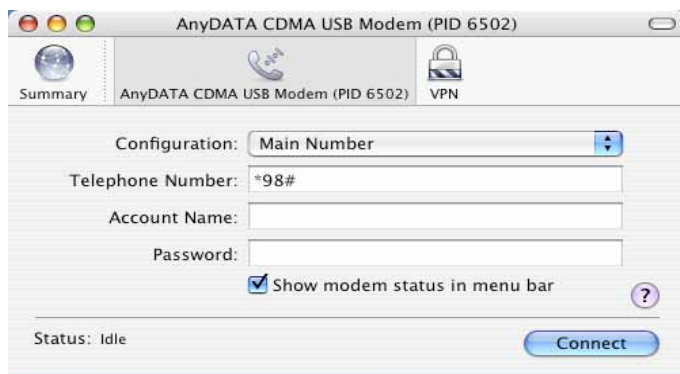
7. Click “**Modem**” tab and select “**AnyDATA Modem Script**” on Modem, and then click “**Apply Now**”.



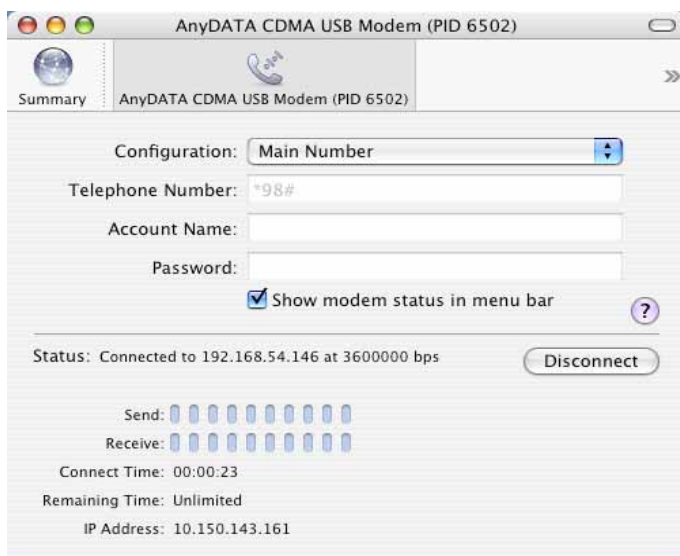
8. Click **“PPP”** tab, **“Dial Now”**. Enter the phone number.



9. Click **“Connect”** to get PPP Connection started.



10. Once the connection is successfully established, the following screen will be displayed.



11. To disconnect, click **“Disconnect”**.

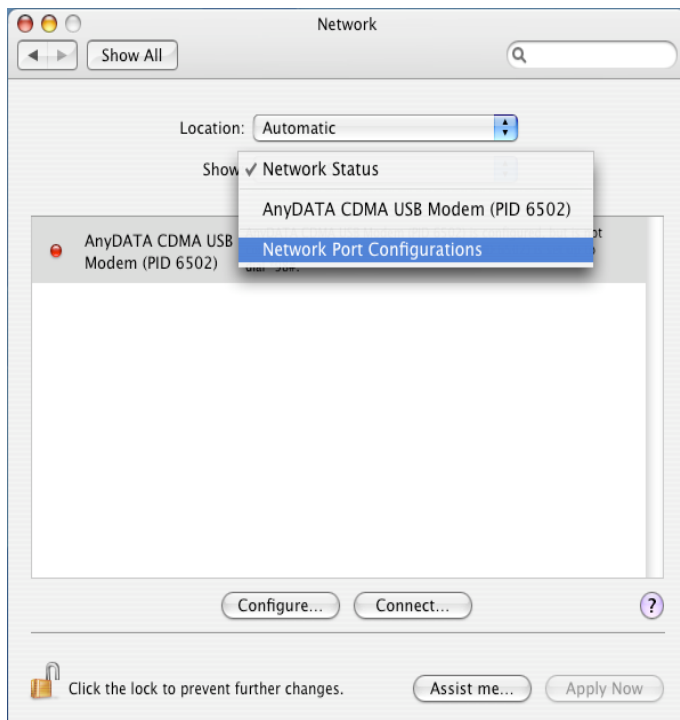
<Caution>

- 1) There can be a problem if AnyDATA connection equipment is removed from PC before performing disconnection. Make sure that it is disconnected and remove the connection equipment.
- 2) If other network Ports of internal Ethernet is activated, then message which indicates IP verification process may appear twice, depending on AnyDATA Connection equipment.
- 3) If you connect USB Modem to other port other than the installed USB Port, a new driver will be searched. In this case, remove USB Modem from PC and delete all drivers installed within it. Then connect USB Modem again to PC and install and use a driver which is newly searched.

For installing newly searched driver, refer to the item after 1-15, page 6.

To delete the driver, perform as the following.

- Tab **Apple menu** => System Preferences=> Network
- Select **“Show”** tab and choose **“Network Port Configuration”**



- Select the old installed driver (**AnyDATA CDMA USB Modem (PID 6502)**) and click “Delete” to delete them all.

